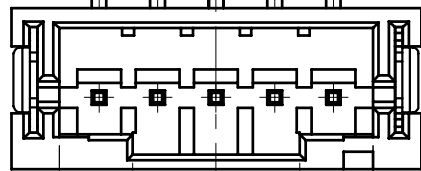
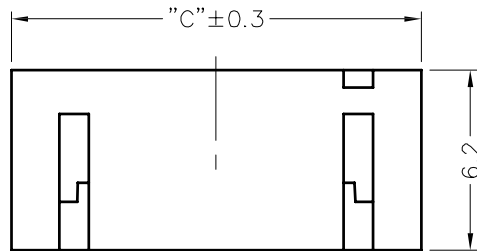


2.0±0.1 "A"±0.2 0.5±0.05



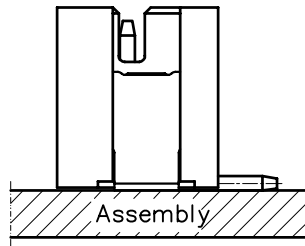
4A~16A

2.5 "B"±0.2 2.5

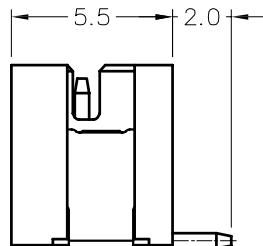


"C"±0.3

6.2



Assembly



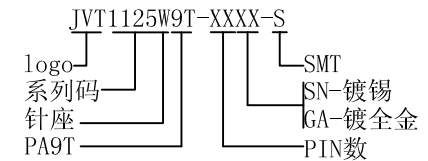
5.5 2.0

SPECIFICATION

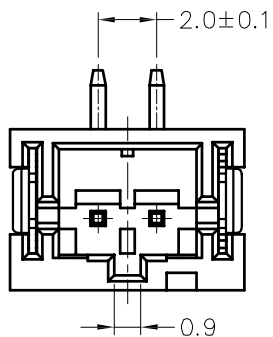
- Voltage rating:100V AC, DC
- Current Rating:2A, AC, DC
- Withstand voltage:800V AC/minute
- Contact resistance:10mΩ max
- Insulation resistance:1000MΩ min
- Temperature range: -25° C ~ +85° C

WAFER

- Material: Base, PA9T UL94V-0
- Contact area, Brass Tin/Gold-plated
- Solder area, Phosphor Bronze Tin/Gold-plated



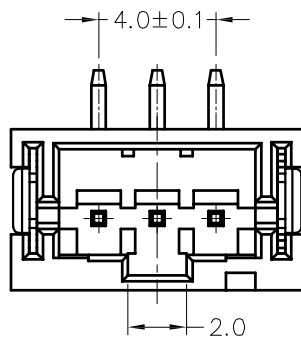
Poles	DIM.A	DIM.B	DIM.C
2	2.0	4.7	8.0
3	4.0	6.7	10.0
4	6.0	8.7	12.0
5	8.0	10.7	14.0
6	10.0	12.7	16.0
7	12.0	14.7	18.0
8	14.0	16.7	20.0
9	16.0	18.7	22.0
10	18.0	20.7	24.0
11	20.0	22.7	26.0
12	22.0	24.7	28.0
13	24.0	26.7	30.0
14	26.0	28.7	32.0
15	28.0	30.7	34.0
16	30.0	32.7	36.0



2.0±0.1

0.9

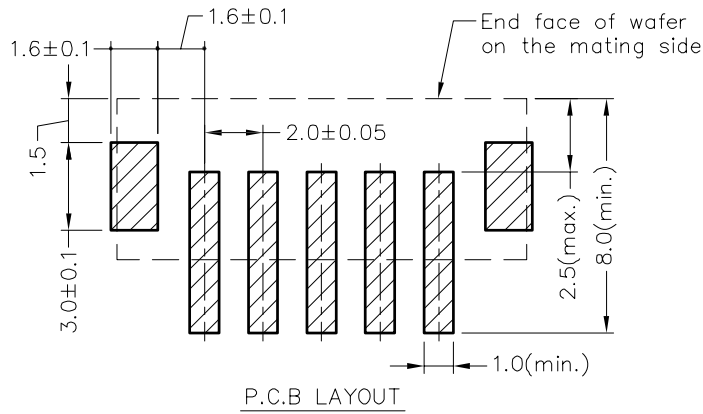
2pin



4.0±0.1

2.0

3pin



GENERAL TOLERANCE	
0	±0.35
.0	±0.30
.00	±0.20
.000	±0.10

乔业电子有限公司
CHYAO YEE CONNECTORS CO., L TD

核准	审核	绘图	品名	PH2.0 立贴WAFER		
	bolly	许向毅	料号	JVT1125W9T-XXXX-S		
			图名	005	版本	A

版本	变更内容	日期	单位	mm	比例	1:1	日期	20130720
----	------	----	----	----	----	-----	----	----------