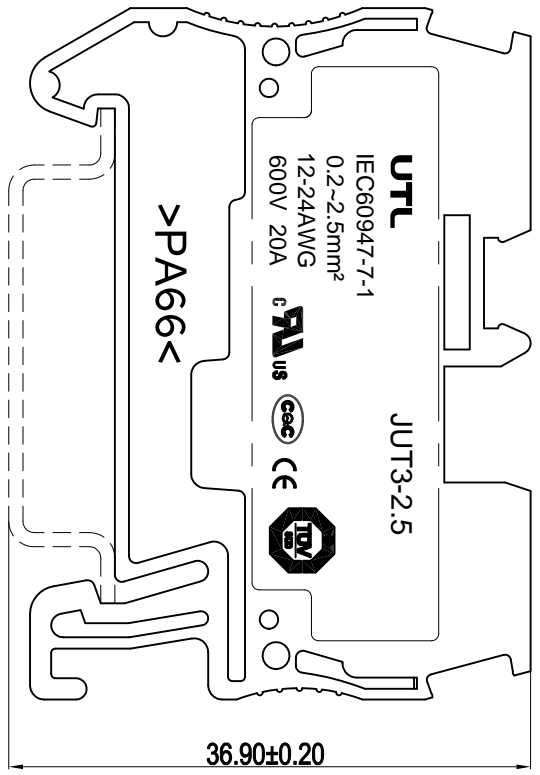
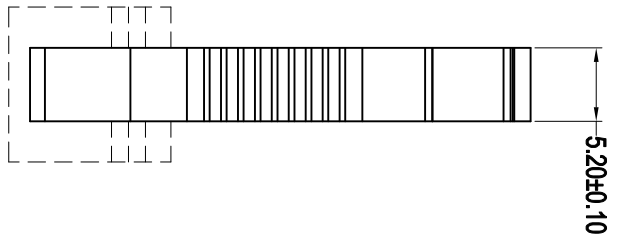
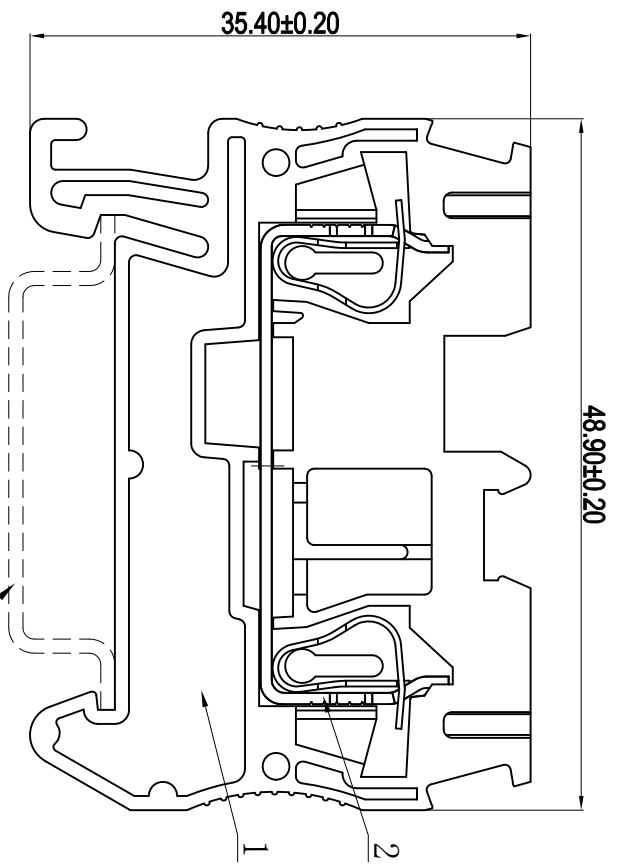


REV.	EQN.NO.	REVISE.NO.	REVISER	APPD.
版本	ECN: 编号	次数	修订者	核准
R1	DRAWING			



### Technical Data

**Material:**

- Body: PA66 UL94 V-0.
- Conductor: Copper, Tin Plated.
- Spring: SUS 301.

**Electrical:**

- Voltage rating/Current rating: IEC 800V/24 A; UL 600V/20 A
- Contact resistance: 20 mΩ Max.
- Insulation resistance: 500V, 500 MΩ Min.
- Withstanding Voltage: AC 2500 V, 1 minute.

**Mechanical:**

- Connection Capacity: 24-14AWG.
- Stripping Length: 10mm.
- Operating temperature: -45° C to +105° C.



ZHEJIANG UTILITY ELECTRICAL CO., LTD  
浙江尤提乐电气有限公司

TYPE NO.	TITLE	SCALE	PAGE
JUT3-2.5-M101	Customer Drawing	FULL	1/1
型号: JUT3-2.5-M101	名称: Customer Drawing	图号: C-DW0253-0	页码: 1/1
APPD. 核准:	DR. 设计: Jammyling	SCALE: FULL	REV.: R1
CHKD. 审核:	UNIT: mm[inch]	SCALE: FULL	REV.: R1
MATL 材质:			

>120	±0.50	ANGLE	±1°
>30~120	±0.30		
>6~30	±0.20		
0~6	±0.10		