



YETDA INDUSTRY LTD.

Technical Data Sheet

MODEL NO : I3535A4P-M

3535 Package 3.45*3.45mm Chip LEDs

Features :

- Package in 8mm tape on 7" diameter reel
- Compatible with automatic placement equipment
- Compatible with reflow solder process

Applications :

- Lighting
- Automotive : backlighting in dashboard and switch
- Backlight for LCD

Dice material	Emitted color	Lens Color
GaAIAs	Infrared	Water Clear

Electrical/Optical Characteristics(Ta=25°C)

Parameter	Test Condition	Symbol	Value			Unit
			Min	Typ	Max	
Forward voltage	I _F =350mA	V _F		1.5	2.0	V
Wavelength	I _F =350mA	W _{ld}		850		nm
Total Radiated Power	I _F =350mA	P _D		300		mW
Viewing angle at 50% I _v	I _F =350mA	2θ 1/2	--	120	--	Deg
Reverse current	V _r =5V	I _R	--	-	10	μA

Absolute Maximum Ratings(Ta=25°C)

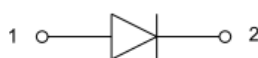
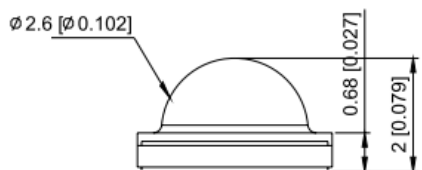
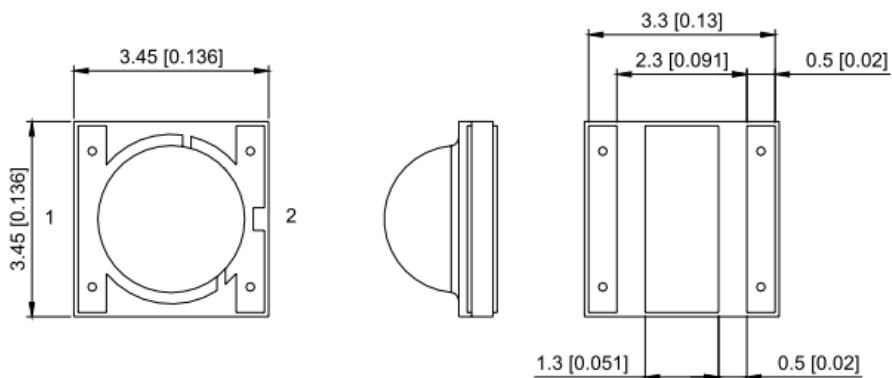
Parameter	Symbol	Value	Unit
		White	
Power dissipation	P _d	2	W
DC Forward current	I _F	1	A
Reverse voltage	V _R	5	V
Operating temperature range	T _{opr}	-40 ~+85	°C
Storage temperature range	T _{stg}	-40 ~+100	°C
Peak puls ng current (1/8 duty f=1kHz)	I _{FP}	1500	mA

2017JAN20Y

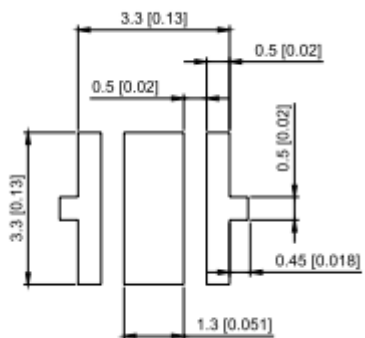


YETDA INDUSTRY LTD.

PACKAGING DIMENSIONS

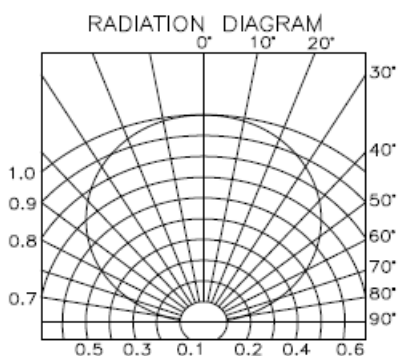
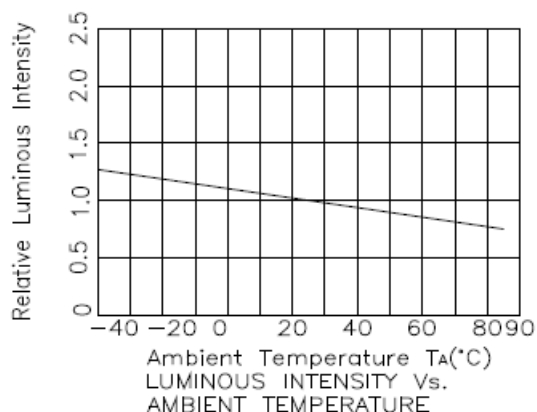
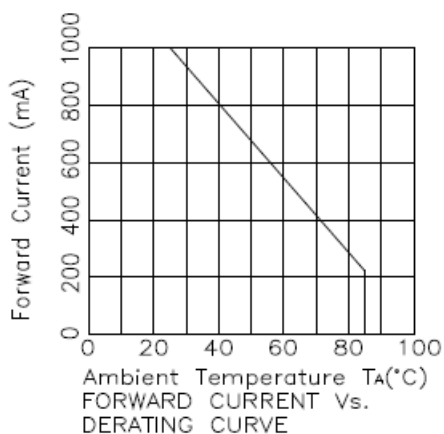
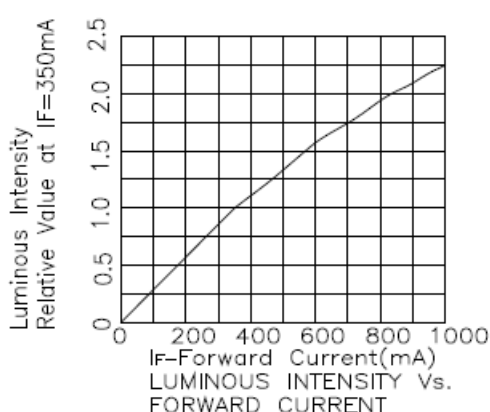
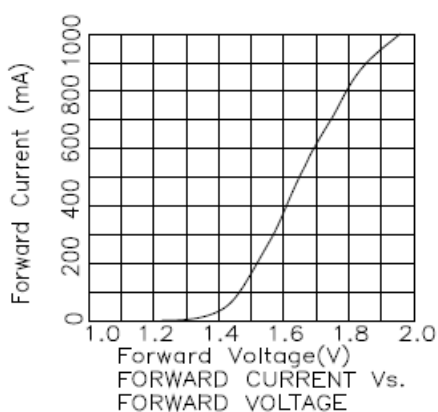
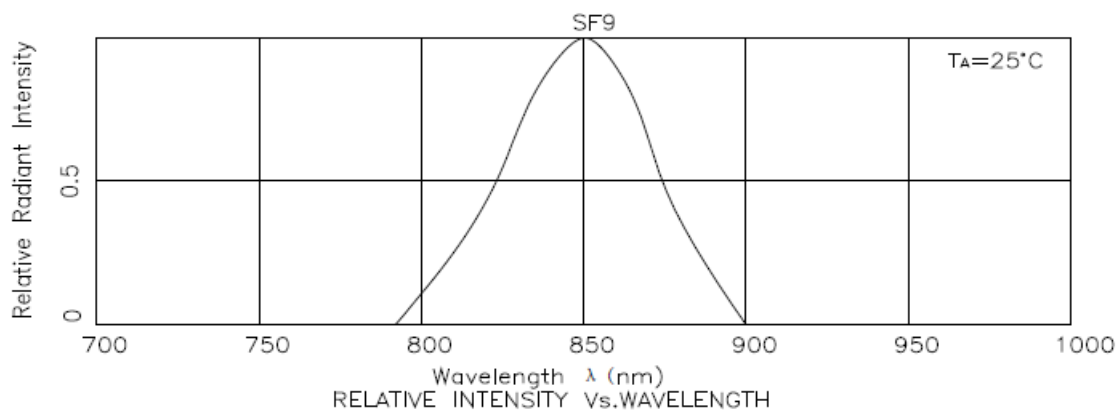


Recommended soldering pattern





YETDA INDUSTRY LTD.





YETDA INDUSTRY LTD.

Precautions For Use :

Over - current - proof

Customer must apply resistors for protection, otherwise slight voltage shift will cause big current change (Burn out will happen)

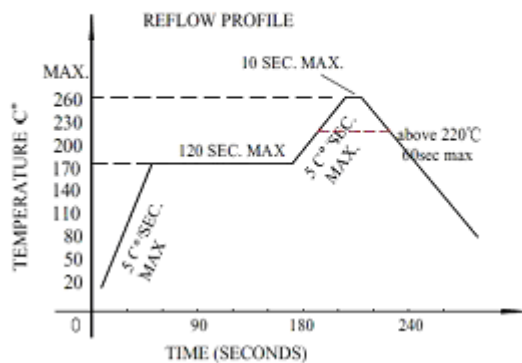
Storage

1. The operation of temperature and R.H. are : $5^{\circ}\text{C} \sim 30^{\circ}\text{C}$, 60%R.H. Max.
2. Once the package is opened, the products should be used within a week. Otherwise, they should be kept in a dampproof box with desiccating reagent. Considering the tape life, we suggest our customers to use our products within 1.5 year (from production date) .
3. It's recommended to bake before soldering when the package is unsealed after 72 hrs. The condition is : $60^{\circ}\text{C} \pm 5^{\circ}\text{C}$ for 15hrs.

■ Reflow Temp/Time

■ Temperature-profile (Surface of circuit board)

Use the following conditions shown in the figure.



NOTES:

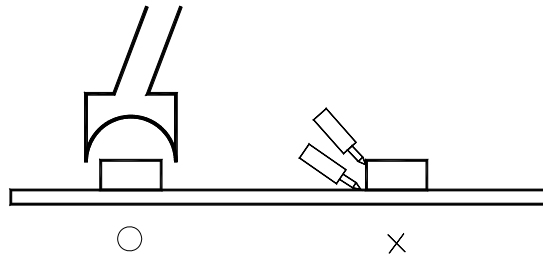
1. We recommend the reflow temperature $245^{\circ}\text{C} (\pm 5^{\circ}\text{C})$. the maximum soldering temperature should be limited to 260°C .
2. dont cause stress to the epoxy resin while it is exposed to high temperature.
3. Number of reflow process shall be 2 times or less.

■Soldering iron

Basic spec is $\leq 5\text{sec}$ when 260°C . If temperature is higher, time should be shorter ($+10^{\circ}\text{C} \rightarrow -1\text{sec}$). Power dissipation of iron should be smaller than 20W, and temperatures should be controllable . Surface temperature of the device should be under 230°C .



YETDA INDUSTRY LTD.



- Avoid rubbing or scraping the resin by any object, during high temperature, for example reflow 、 solder etc.

Dimensions of Tape (Unit: mm)

